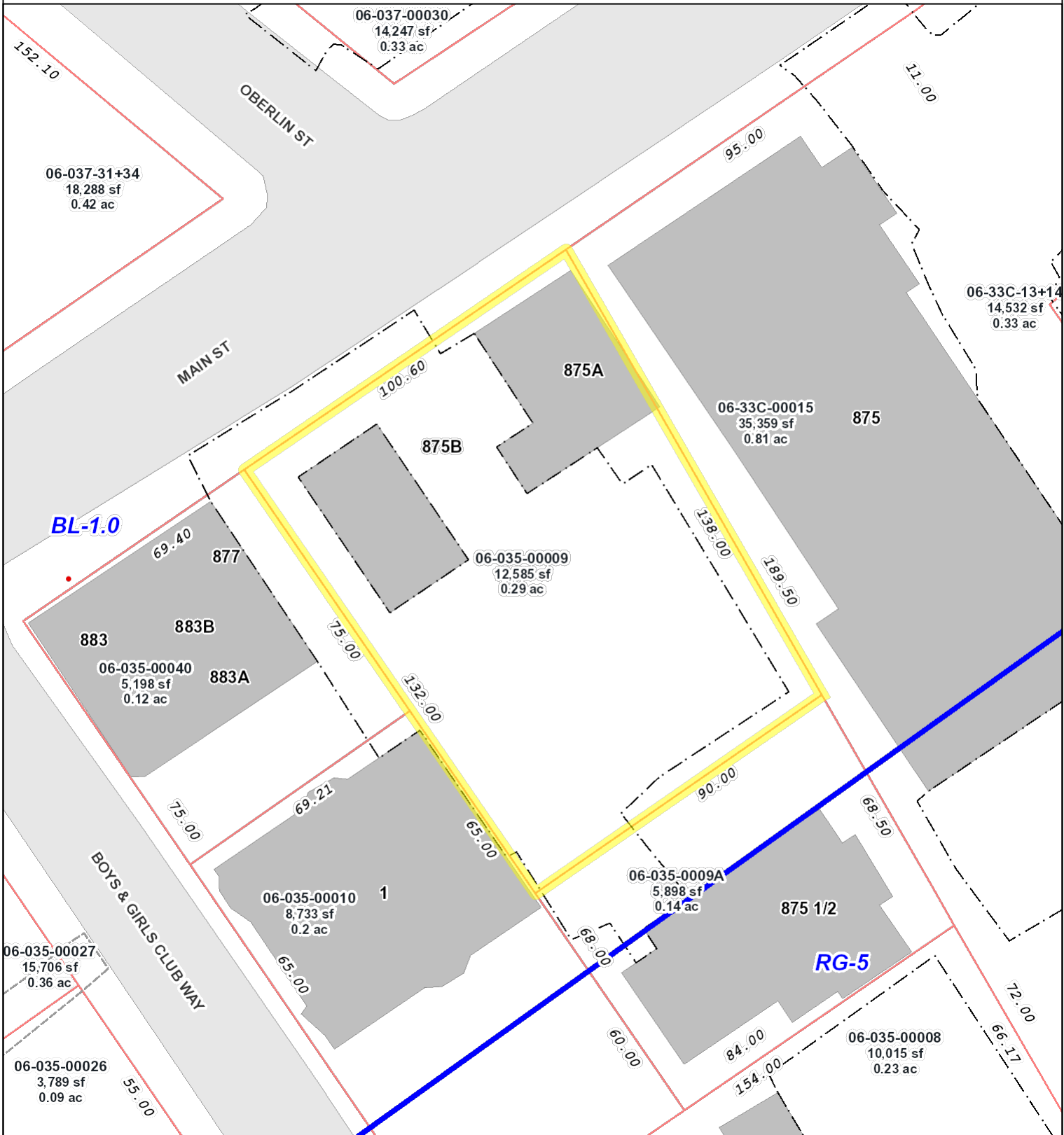


875B Main Street



DATA SOURCES:
 Basemap data: City of Worcester, MA Geographic Information System
 Original Data - Digitized at 1:480 scale (Data true resolution: 1 inch = 40 feet).
 Updated Using Spring 2003 Photography at 1 inch = 100 feet
 Further Updates Using City of Worcester Information
 Property Details: City of Worcester, MA Assessing Division

COORDINATE SYSTEM:
 All map data is in the Massachusetts State Plane Coordinate system,
 North American Datum of 1983, Massachusetts Mainland Zone (4151).
 Units are measured in Feet. Vertical Datum NAVD88.

DISCLAIMER:
 Considerable effort has been made to ensure the accuracy, correctness
 and timeliness of data presented; however, this information is only as
 accurate as its sources and may not reflect the most current information.
 This map is a graphical representation of information for tax administration
 purposes only and does not represent a professional survey. The City of
 Worcester assumes no liability for any errors, omissions or inaccuracies
 and makes no warranty, representation or guaranty of any kind as to the
 content or for any decisions made or actions taken or not taken by the
 user based upon any information provided on this map.

www.worcesterma.gov April 2, 2024 1" = 35 ft

- Hydrants
- Zoning
- Driveways
- Parking Lots
- Parcels
- Edge of Pavement
- Road Surface
 - Paved
 - Unpaved
- Streams
- Ponds
- Buildings
 - Building
 - Deck/Patio
- Open Space
 - Conservation Restriction
 - City of Worcester Parks
 - Worcester Conservation Commission
 - Greater Worcester Land Trust
- Massachusetts Audubon Society
- Commonwealth of Massachusetts
- Other (school, cemetery, private)
- City